

The Academic College of Tel Aviv - Yaffo (MTA)



Co-funded by the
Erasmus+ Programme
of the European Union



Estonian
Business
School
Tallinn | Helsinki



EFMD

CSI



Deusto
Universidad de Deusto
University of Deusto



UNIVERSITÀ
DEGLI STUDI
DI PADOVA

KIBBUTZIM COLLEGE
OF EDUCATION TECHNOLOGY & ARTS



Tel-Hai
College

NATIONAL
UNION OF
ISRAELI
STUDENTS

THE ACADEMIC
of TEL AVIV-YAFFO



The Academic College of Tel Aviv Yaffo



Co-funded by the
Erasmus+ Programme
of the European Union



Estimote
Business School
Tel Aviv University



RSM
Erasmus

Deusto
Universidad de Deusto
University of Deusto



Bezalel
Academy of
Arts and Design
Jerusalem



KIBBUTZIM COLLEGE
OF EDUCATION TECHNOLOGY & ARTS



THE ACADEMIC
OF TEL AVIV-YAFFO



THE NATIONAL
UNION OF
ISRAELI
STUDENTS



INNOVATIVE FINANCE INCLUSION

Vision

We are dedicated to provide our community with **academic opportunities** that **advance positive social change and sustainable economic security** through the practice of a new academia: **experiential learning, applied research, and social commitment.**

We make our stand in Jaffa, the heart and soul of Tel Aviv-Yaffo, A divergent crossroads of cultural exchange and knowledge overlooking an open sea of possibility.

Facts & Figures

**Founded
1994**

**14,000
Alumni**

**4,200
Students**

**417
Faculty**

**5
Schools**

Behavioral Sciences

Computer Science

Computer Sciences

Government & Society

Nursing Science

**11
Programs**



Co-funded by the
Erasmus+ Programme
of the European Union



Sustainable Finance @ MTA

- Teaching
- Research
- Experience
- Social Responsibility

MTA IFI Team

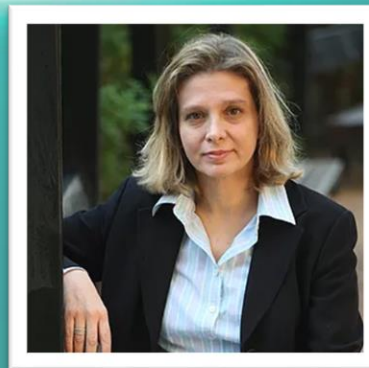


Dr. Shirit Katav-Hertz

School of Management & Economics

Head of the B.A. Program in Economics and Management.

Shirit researches in the fields of Behavioral Economics, Immigration, Labor Economics and Labor standards, Culture and Economics, Population Economics and Household Economics and Experimental Economics.



Prof. Shlomit Zuta

School of Management & Economics

Prof. Zuta holds a Ph. D. degree from the New York University Stern School of Business. Her research focuses on corporate governance, and it draws on her experience as a board member of various public, financial and government-owned companies in Israel.



Dr. Arie Krampf

School of Government & Society

Arie Krampf is a political economist. His research focuses on comparative capitalism and International Political Economy



Dr. Zafir Bloch David

School of Management & Economics

Lecturer. Shared economy



Co-funded by the
Erasmus+ Programme
of the European Union



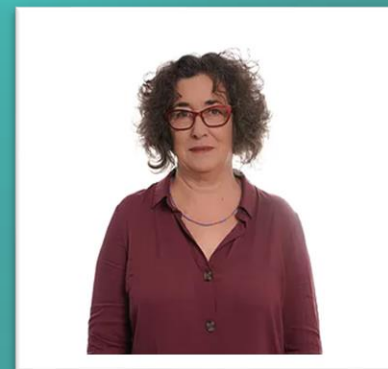
MTA IFI Team



Mr. Flynn Ofer

The Purpose Generator

For over a decade, through the implementation of my proprietary “Purpose Generator” program, I have helped social entrepreneurs, non-profits and businesses establish and obtain sustainable social, environmental and financial goals (AKA “the great win-win”). I did this through creative leadership, strategic partnerships, comprehensive organizational development processes and innovative tools and solutions.



Dr. Nurit Hashimshony-Yaffe

School of Government & Society

Nurit’s research and teaching interests converge, Environmentalism and Climate Change Crisis social impacts on marginalised societies in Africa as elsewhere, and social organizing and activism to confront these changes. She is also a member of COST Action 16233- Drylands facing change and COVID -19 in Drylands Africa research group.



Dr. Rachel Calipha

School of Management & Economics

Dr. Rachel Calipha. Head of Capital Market Specialty (BA in Economics & Management), Head of Strategy Specialty (MBA program).

(Research interests: finance & strategy (e.g. M&As , prediction markets and impact investments



Co-funded by the
Erasmus+ Programme
of the European Union



MTA IFI Team



Dr. Yifat Reuveni

Erasmus+ IFI Academic Director

"Innovation is not about having a new idea. innovation is about letting go of an old belief"

Bertrand Piccard - Solar Impulse Foundation, Switzerland



Dr. Vered Holzmann

Director of R&D and Innovation Strategy, innovation and project management

"It's all about people"



Mr. Sahar Peshkess

Erasmus+ IFI Administration Manager

"The most difficult thing is the decision to act. The rest is merely tenacity. The fears are paper tigers. You can do anything you decide to do. You can act to change and control your life and the procedure. The process is its own reward" Amelia Earhart



Co-funded by the
Erasmus+ Programme
of the European Union





Co-funded by the
Erasmus+ Programme
of the European Union



Estonian
Business
School
Tallinn | Helsinki



EFMD



CSI



Deusto
Universidad de Deusto
University of Deusto



בצלאל
אקדמיה לאמנות
ולאדריכלות
ירושלים

Bezalel
Academy of
Arts and Design
Jerusalem

أكاديمية للفنون
والإبداع
القدس



האוניברסיטה העברית בירושלים
THE HEBREW UNIVERSITY OF JERUSALEM



UNIVERSITÀ
DEGLI STUDI
DI PADOVA



KIBBUTZIM COLLEGE
OF EDUCATION TECHNOLOGY & ARTS



Tel-Hai
College



NATIONAL
UNION OF
ISRAELI
STUDENTS



IFI
INNOVATIVE FINANCE INCLUSION